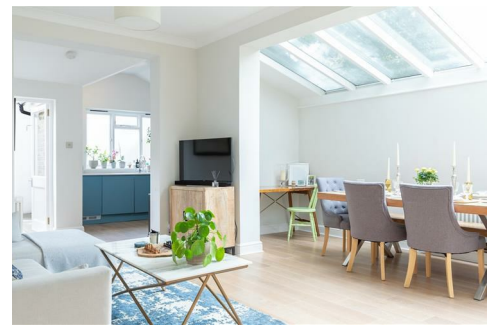




CHATTERTON | REES



**37a Micklethwaite Road, London, SW6 1QD**

**£885,000**

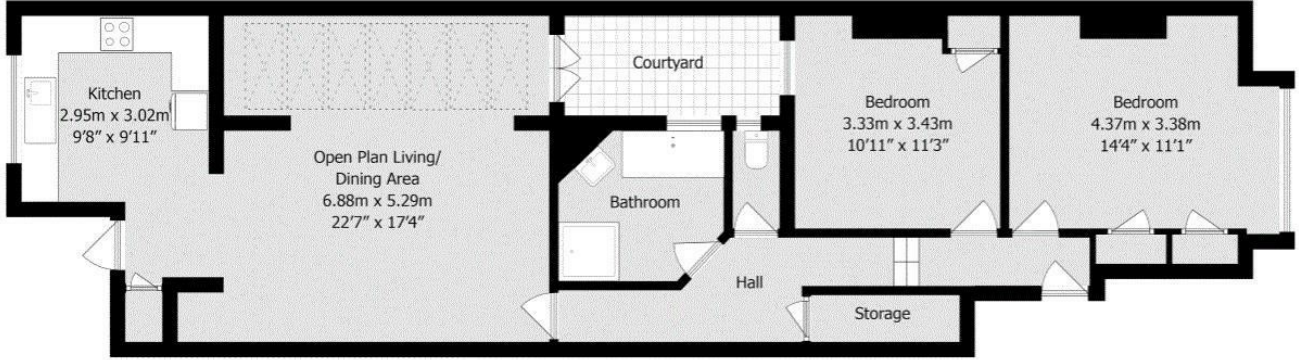
A beautiful two bedroom garden flat in the heart of Fulham. This large ground floor flat has 1046sqft of internal space with two large double bedrooms at the front of the property with the master benefitting from excellent built in storage.

As you head toward the back of the property there is a large bathroom with separate bath and shower that is fitted with very high quality fixtures and tiles and finally a very wide living and dining are with enough space to seat 8-10 people that is semi open to a stunning kitchen that over looks the south facing patio garden.

The property in general has great storage a light and bright feel throughout along with a share of freehold and the private garden it really is a perfect flat if you are looking for something close to shops, restaurants or stations with Fulham Broadway, west Brompton or Earls Court within easy reach.



# Floor Plan



Approximate gross internal floor area 97.2 sq m/ 1046 sq ft

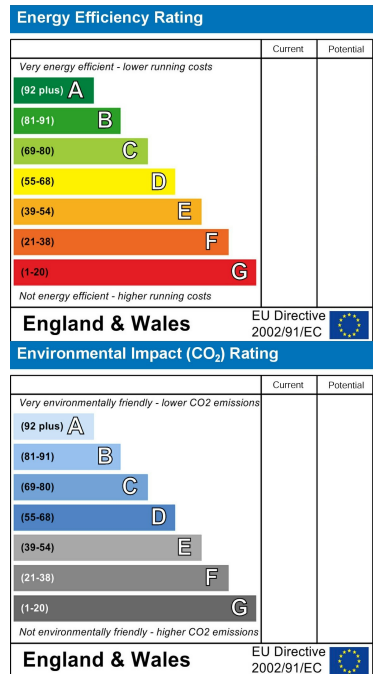
Whilst every care has been taken to ensure accuracy, dimensions are approximate and for illustrative purposes only.

Created by Property Photography UK for Chatterton Rees. All rights reserved.

## Area Map



## Energy Efficiency Graph



These particulars, whilst believed to be accurate are set out as a general outline only for guidance and do not constitute any part of an offer or contract. Intending purchasers should not rely on them as statements of representation of fact, but must satisfy themselves by inspection or otherwise as to their accuracy. No person in this firm's employment has the authority to make or give any representation or warranty in respect of the property.